



This flat ABS operating front was designed for use as a machine operating panel. The wraparound seal provides IP 54 protection in respect of the installation area. The front surface was lowered especially for the protected fitting of membrane keyboards or other front elements. The installed electronic components can be protected by means of a sheet metal hood mounted on the back.

The design and construction of these special hoods makes low-cost processing possible, including for small series. A special flush-mounted frame is available for flush-mounted assembly. Good EMC screening is achieved by the later application of metal coatings on the front lid.

Enclosure material: CF: ABS;
CB and CR:
galvanised sheet
steel, 0.8 mm.
For technical data
see pages 646-651.

Colour: CF: light grey,
similar to RAL 7035.
Special colours and
min. order quanti-
ties on request.

Ingress protection: CF: up to IP 54/
DIN EN 60529,
depending on the
size and character-
istics of the instal-
lation area.

Scope of delivery:

CF...: Front lid, double lip seal,
screw covers
CB...: Base, screws
CR...: Flush-mounted frame, screws

Note:

The CB bases can also be used as
EMC protection with the RCP/RCPM...F
enclosures (see page 323 ff.).

CombiFront		Size in mm	
Model	Order no.	W	H
CF 130	69130009	131.0	131.0
CF 160	69160009	166.0	106.0
CF 200	69200009	213.0	125.0
CF 250	69250009	257.0	157.0
CF 310	69310009	296.0	196.0
CF 400	69400009	363.6	233.6

CombiBac		Size in mm			Can be fitted in RCP wall enclosures	
Model	Order no.	W	H	D	Model	See pages
CB 1304	69130400	96.4	115.2	35.0	RCP/RCPM 130 F	324 - 325
CB 1307	69130700	96.4	115.2	65.0	-	
CB 1310	69131000	96.4	115.2	100.0	-	
CB 1604	69160400	131.4	90.2	35.0	RCP/RCPM 160 F, RCP/RCPM 170 F	326 - 329
CB 1607	69160700	131.4	90.2	65.0	RCP/RCPM 170 F	328 - 328
CB 1610	69161000	131.4	90.2	100.0	-	
CB 2004	69200400	179.4	109.2	35.0	RCP/RCPM 200 F	330 - 331
CB 2007	69200700	179.4	109.2	65.0	-	
CB 2010	69201000	179.4	109.2	100.0	-	
CB 2504	69250400	222.4	141.2	35.0	RCP/RCPM 250 F	332 - 333
CB 2507	69250700	222.4	141.2	65.0	RCP/RCPM 250 F	332 - 333
CB 2510	69251000	222.4	141.2	100.0	-	
CB 3104	69310400	261.4	180.2	35.0	RCP/RCPM 310 F, RCP/RCPM 350 F	334 - 337
CB 3107	69310700	261.4	180.2	65.0	RCP/RCPM 310 F, RCP/RCPM 350 F	334 - 337
CB 3110	69311000	261.4	180.2	100.0	RCP/RCPM 350 F	336 - 337
CB 4004	69400400	322.4	215.2	35.0	RCP/RCPM 400 F	338 - 339
CB 4007	69400700	322.4	215.2	65.0	RCP/RCPM 400 F	338 - 339
CB 4010	69401000	322.4	215.2	100.0	RCP/RCPM 400 F	338 - 339

CombiFrame		Size in mm	
Model	Order no.	W	H
CR 130	69013050	151.0	151.0
CR 160	69016050	186.0	126.0
CR 200	69020050	233.0	145.0
CR 250	69025050	277.0	177.0
CR 310	69031050	316.0	216.0
CR 400	69040050	383.6	253.6

CombiBac

Series 130



CF 130



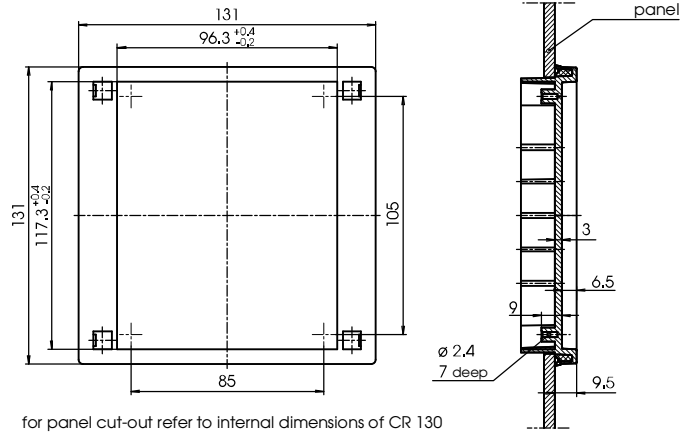
CB 13..



CR 130

Order designation

Model	Order no.
CF 130	69130009

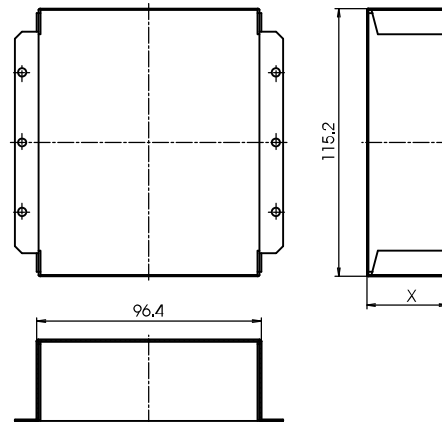


for panel cut-out refer to internal dimensions of CR 130

Z-2601362

Order designation

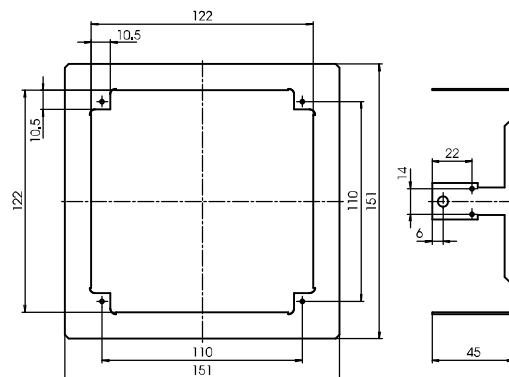
Model	Order no.	Depth X
CB 1304	69130400	35
CB 1307	69130700	65
CB 1310	69131000	100



Z-2601368

Order designation

Model	Order no.
CR 130	69013050

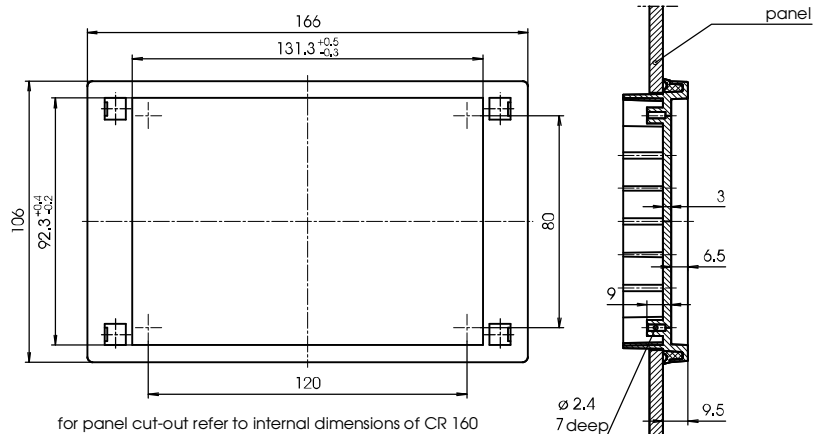


Z-2601374

Series 160

Order designation

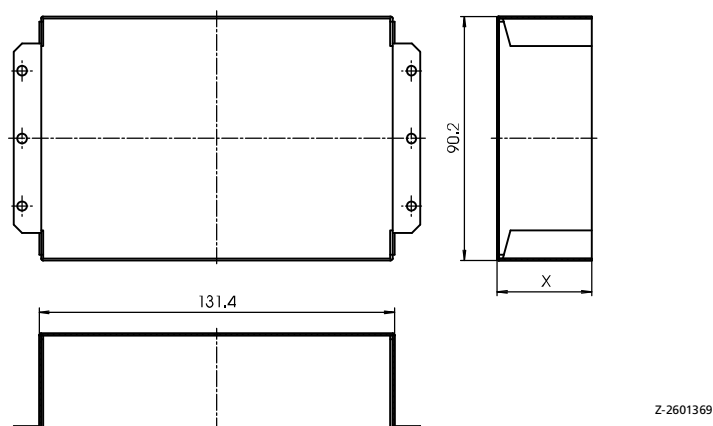
Model	Order no.
CF 160	69160009



CF 160

Order designation

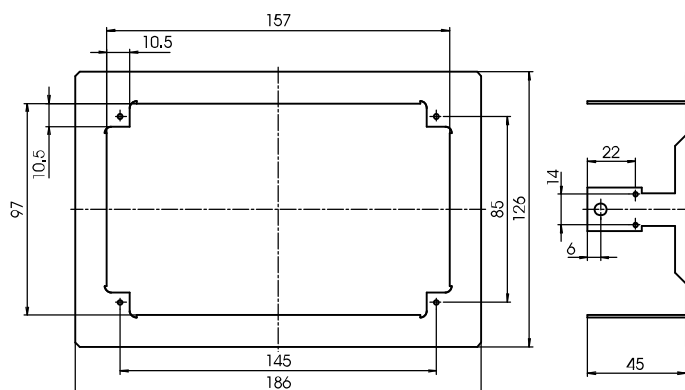
Model	Order no.	Depth X
CB 1604	69160400	35
CB 1607	69160700	65
CB 1610	69161000	100



CB 16..

Order designation

Model	Order no.
CR 160	69016050



CR 160

CombiBac

Series 200



CF 200



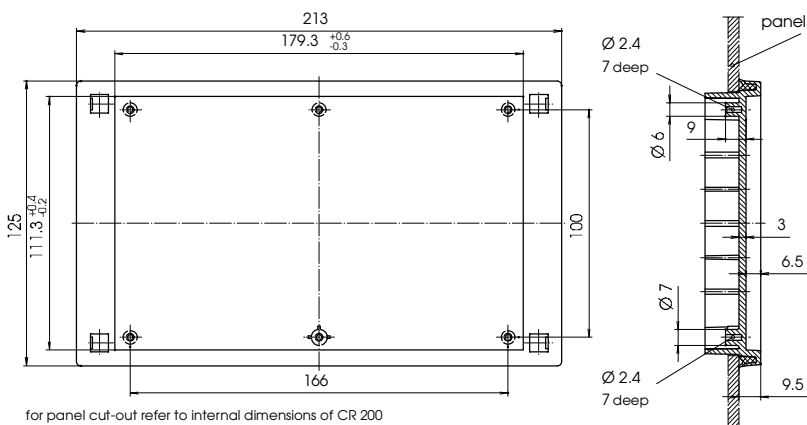
CB 20..



CR 200

Order designation

Model	Order no.
CF 200	69200009

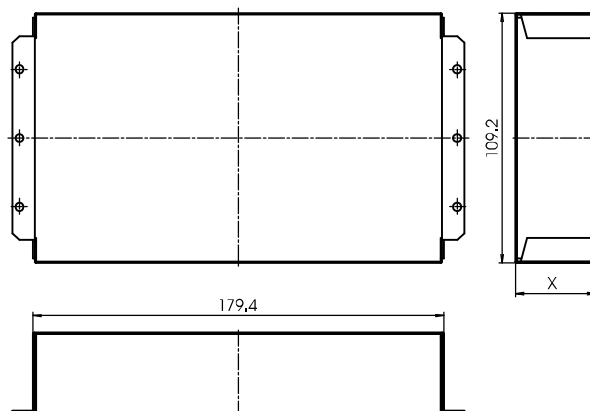


Z-2601364

for panel cut-out refer to internal dimensions of CR 200

Order designation

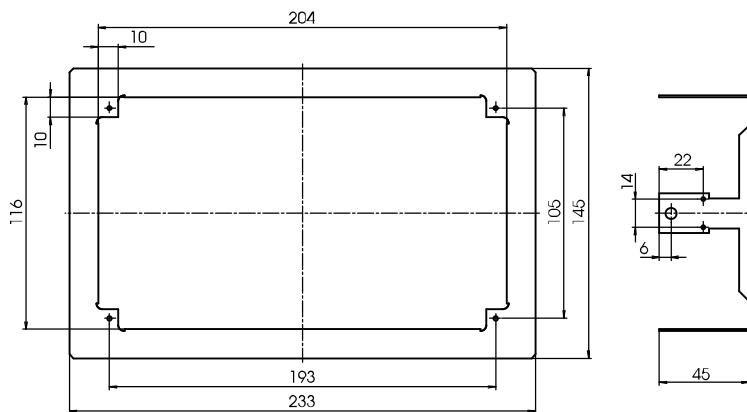
Model	Order no.	Depth X
CB 2004	69200400	35
CB 2007	69200700	65
CB 2010	69201000	100



Z-2601370

Order designation

Model	Order no.
CR 200	69020050

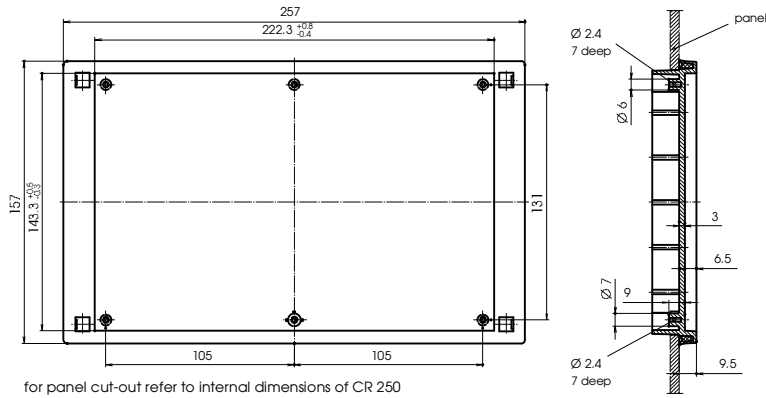


Z-2601376

Series 250

Order designation

Model	Order no.
CF 250	69250009



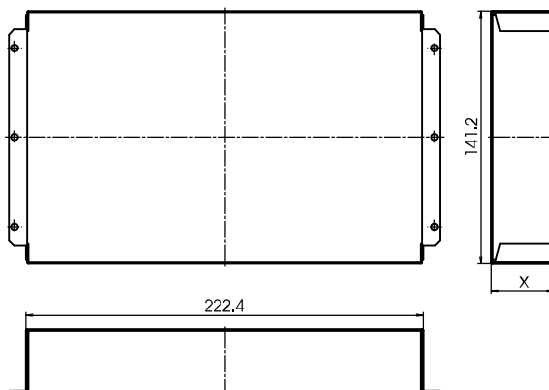
Z-2601365



CF 250

Order designation

Model	Order no.	Depth X
CB 2504	69250400	35
CB 2507	69250700	65
CB 2510	69251000	100



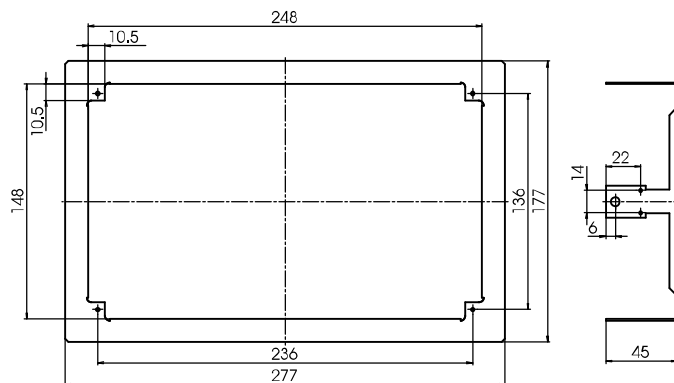
Z-2601371



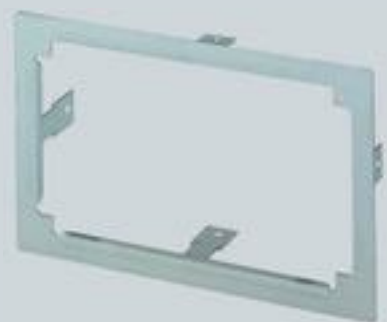
CB 25..

Order designation

Model	Order no.
CR 250	69025050



Z-2601377



CR 250

CombiBac

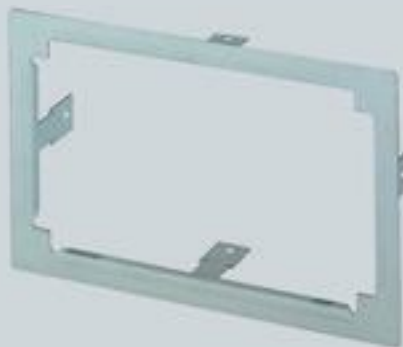
Series 310



CF 310



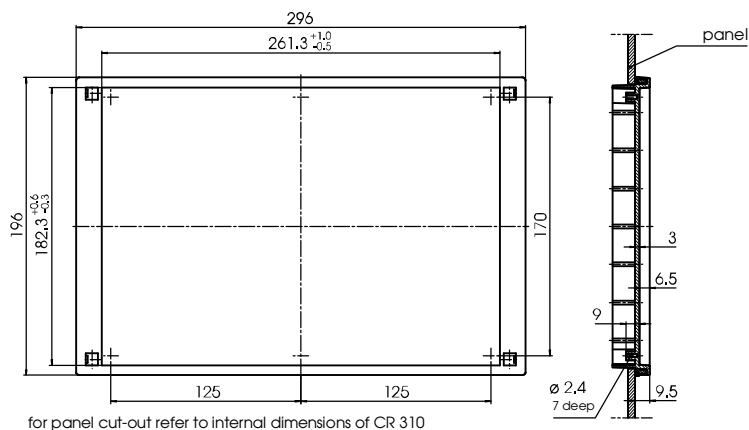
CB 31..



CR 310

Order designation

Model	Order no.
CF 310	69310009

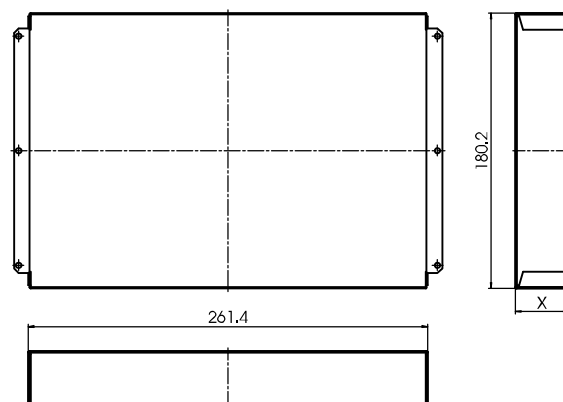


for panel cut-out refer to internal dimensions of CR 310

Z-2601366

Order designation

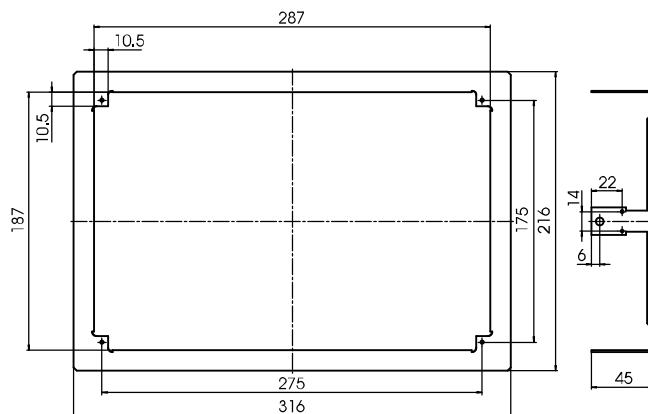
Model	Order no.	Depth X
CB 3104	69310400	35
CB 3107	69310700	65
CB 3110	69311000	100



Z-2601372

Order designation

Model	Order no.
CR 310	69031050

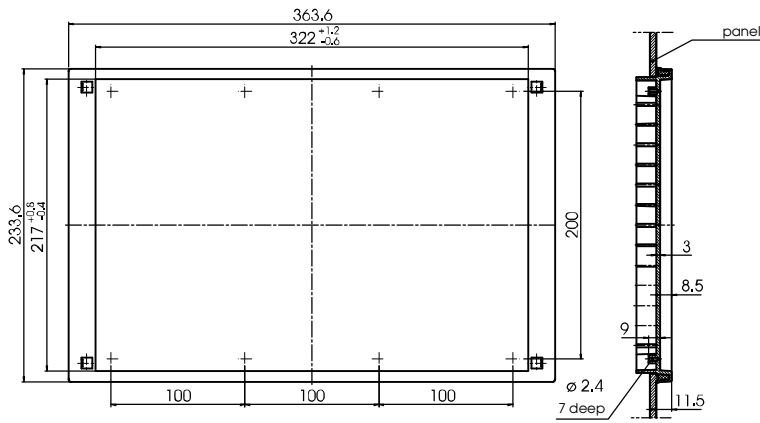


Z-2601378

Series 400

Order designation

Model	Order no.
CF 400	69400009



for panel cut-out refer to internal dimensions of CR 400

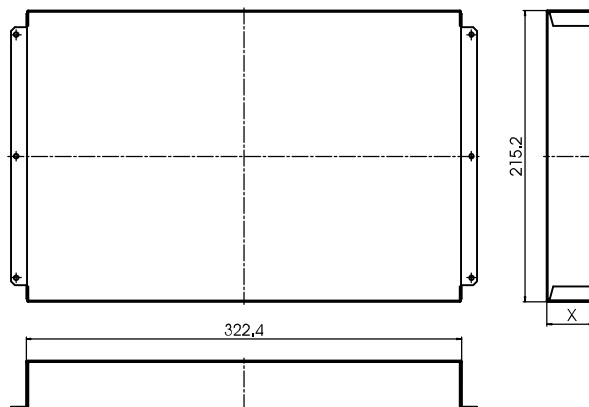
Z-2601367



CF 400

Order designation

Model	Order no.	Depth X
CB 4004	69400400	35
CB 4007	69400700	65
CB 4010	69401000	100



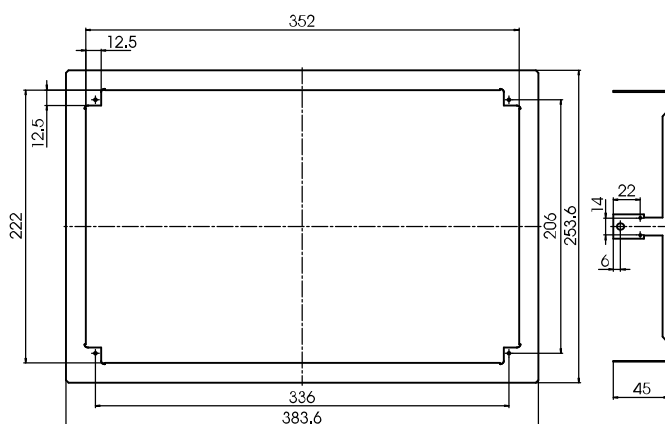
Z-2601373



CB 40..

Order designation

Model	Order no.
CR 400	69040050



Z-2601379



CR 400